

SCANROBOT® 2.0 MDS: RT-BATCH WORKFLOW OPTIONS

SCANROBOT® 2.0 MDS

MASS DIGITIZATION SYSTEM



SPECIFICATIONS - RT-Batch workflows

(optionally available for ScanRobot® 2.0 MDS)

SCANROBOT® 2.0 MDS: RT-BATCH WORKFLOW OPTIONS

1 General

RT Batch workflows are additional enhancements (software add-ons) for your automatic book scanner "ScanRobot® 2.0 MDS" which enable automated batch processing in scan-free periods (e.g. overnight, weekends, longer scanning breaks etc.). Hence those RT-batch workflows may only be started before or after scanning.

Time consuming goals like creation of another output format (e.g. for archiving*, presentation* and/or reprint* needs) and/or moving of complete scan-jobs to e.g. another storage place will be processed fully automated and scheduled in work-free time slots (e.g. overnight). In this way, work resources can be saved easily.

Prerequisite for the installation of the "RT-batch workflows" is the availability of an up-to-date "ScanGate® RT" license.

Each of the further described "RT-Batch workflows" can be optionally purchased for your "ScanRobot® 2.0 MDS".

* See the technical specification of each of the outputs within the brochure of the automatic book scanner "ScanRobot® 2.0 MDS".

SCANROBOT® 2.0 MDS: RT-BATCH WORKFLOW OPTIONS

1.1 RTB-Workflow: “RT Archive -> RT Presentation”

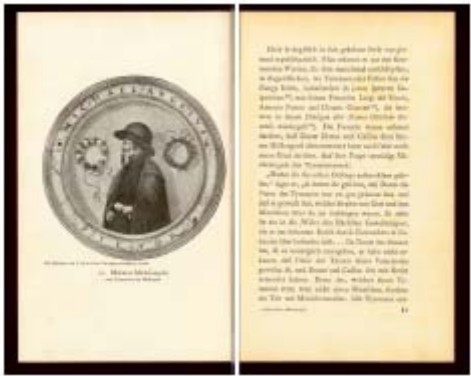

This is an optional “RT-Batch workflow” for “ScanGate® RT” on your automatic book scanner “ScanRobot® 2.0 MDS”.

Goal

The aim of this specific RTB-workflow is to automatically generate a “RT Presentation output” based from the originally scanned “RT Archive output”.

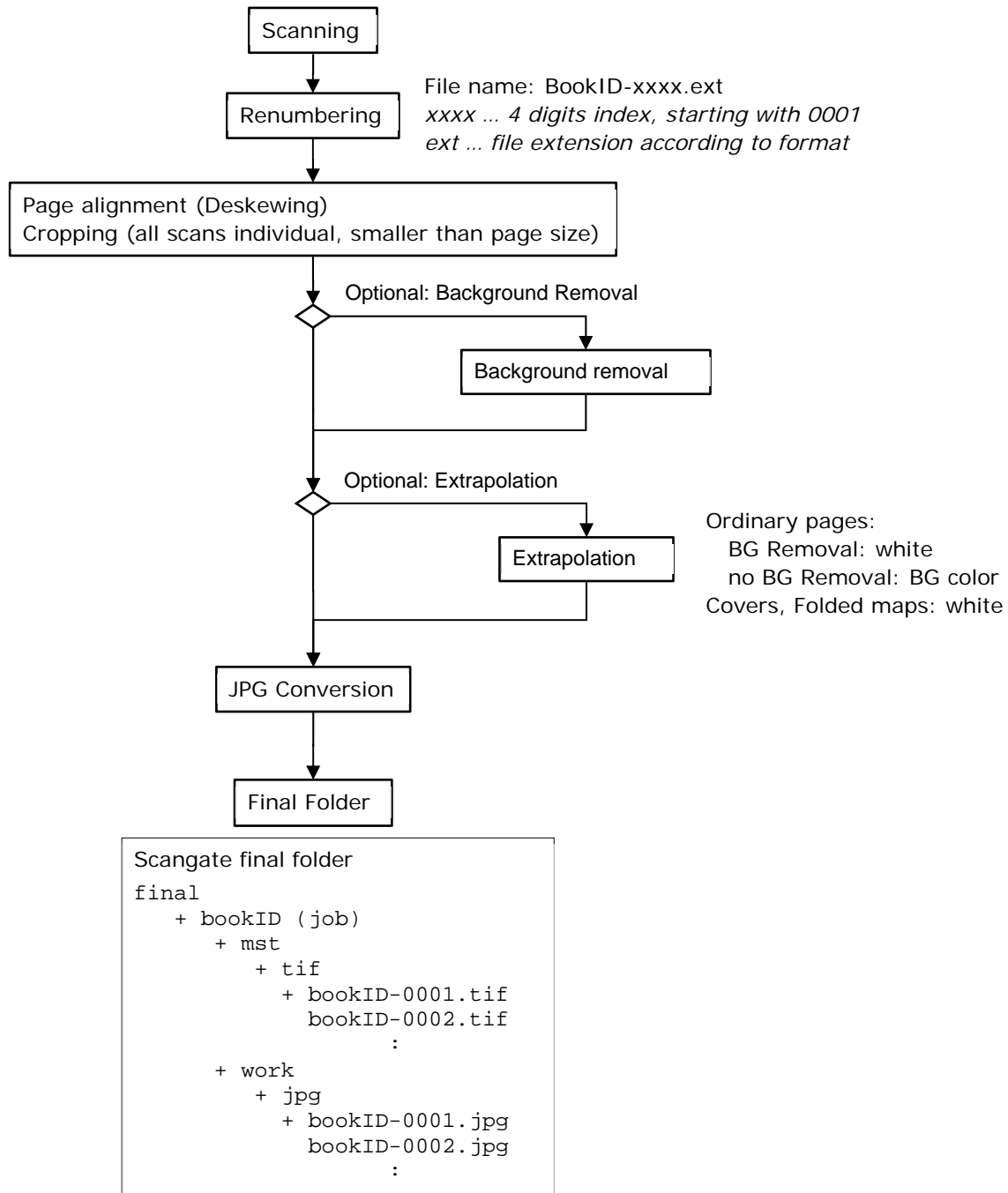
Prerequisites for the execution of this RT-Batch workflow:

- Input: originally scanned master TIFF based on the RT-Archive output
- Output: “RT-Archive Master TIFF” and “RT-Presentation JPG”

	RT-Archive	RT-Presentation
Input	originally scanned master TIFF based on the RT-Archive output	
Layout		
Output	RT-Archive Master TIFF	RT-Presentation JPG

SCANROBOT® 2.0 MDS: RT-BATCH WORKFLOW OPTIONS

Workflow description (additional customization not included)



SCANROBOT® 2.0 MDS: RT-BATCH WORKFLOW OPTIONS

1.2 RTB-Workflow: “RT Archive -> RT Reprint”

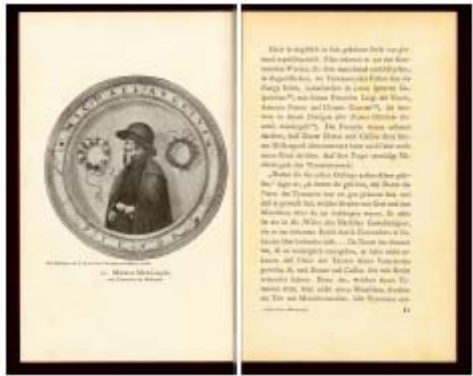

This is an optional “RT-Batch workflow” for “ScanGate® RT” on your automatic book scanner “ScanRobot® 2.0 MDS”.

Goal

The aim of this specific RTB-workflow is to automatically generate a “RT Reprint output” based from the originally scanned “RT Archive output”.

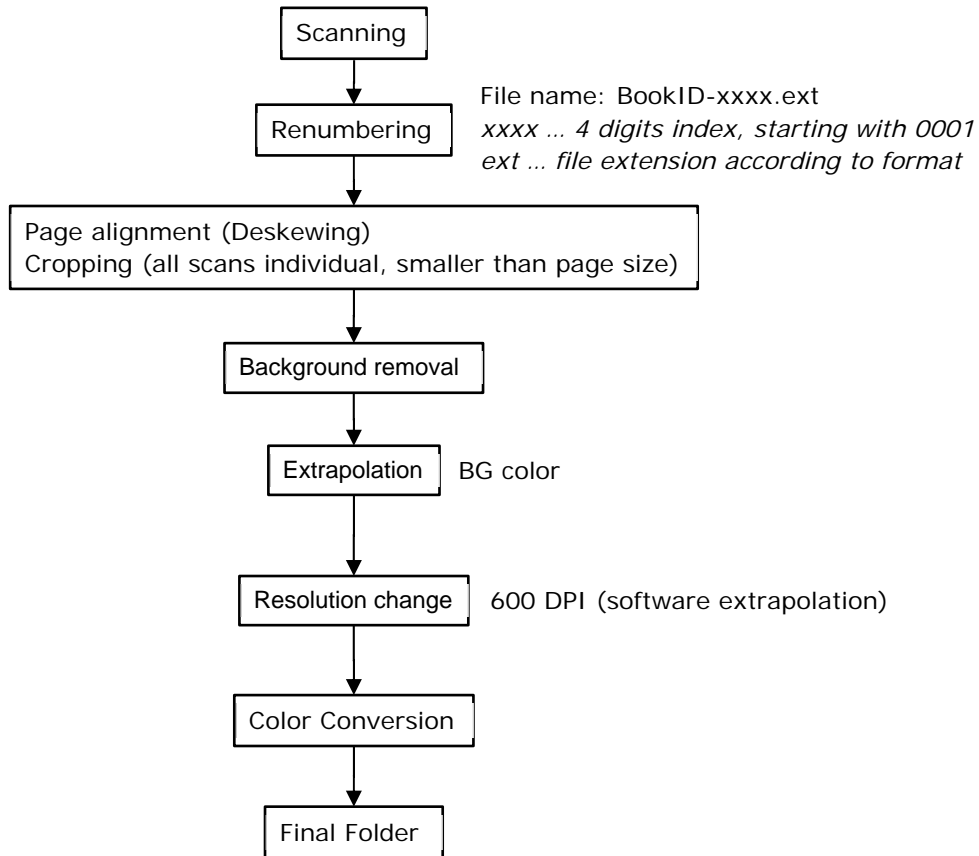
Prerequisites for the execution of this RT-Batch workflow:

- Input: originally scanned master TIFF based on the RT-Archive output
- Output: “RT-Archive Master TIFF” and “RT-Reprint TIFF (black & white)”

	RT-Archive	RT-Reprint
Input	originally scanned master TIFF based on the RT-Archive output	
Layout		
Output	RT-Archive Master TIFF	RT-Reprint TIFF (black & white)

SCANROBOT® 2.0 MDS: RT-BATCH WORKFLOW OPTIONS

Workflow description (additional customization not included)



```

Scangate final folder
final
+ bookID (job)
+ mst
+ tif
+ bookID-0001.tif
+ bookID-0002.tif
:
+ bitonal
+ tif
+ bookID-0001.tif
+ bookID-0002.tif
:
  
```

SCANROBOT® 2.0 MDS: RT-BATCH WORKFLOW OPTIONS

1.3 RTB-Workflow: “Automated PDF conversion”

This is an optional “RT-Batch workflow” for “ScanGate® RT” on your automatic book scanner “ScanRobot® 2.0 MDS”.

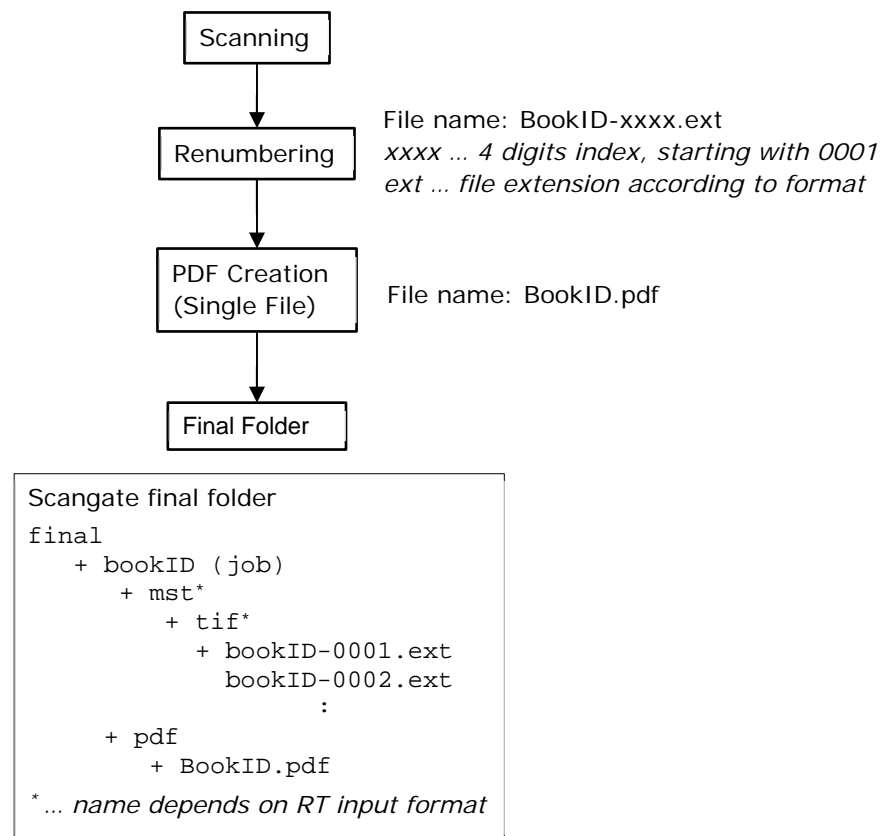
Goal

The aim of this specific RTB-workflow is to automatically generate a multipage PDF based on your originally scanned output files plus an extra 2 level storage folder structure.

Prerequisites for the execution of this RT-Batch workflow:

- Input: originally scanned output files
- Output: originally scanned output files & multipage PDF

Workflow description (additional customization not included)



SCANROBOT® 2.0 MDS: RT-BATCH WORKFLOW OPTIONS

1.4 RTB-Workflow: “Move Scan-Jobs”

This is an optional “RT-Batch workflow” for “ScanGate® RT” on your automatic book scanner “ScanRobot® 2.0 MDS”.

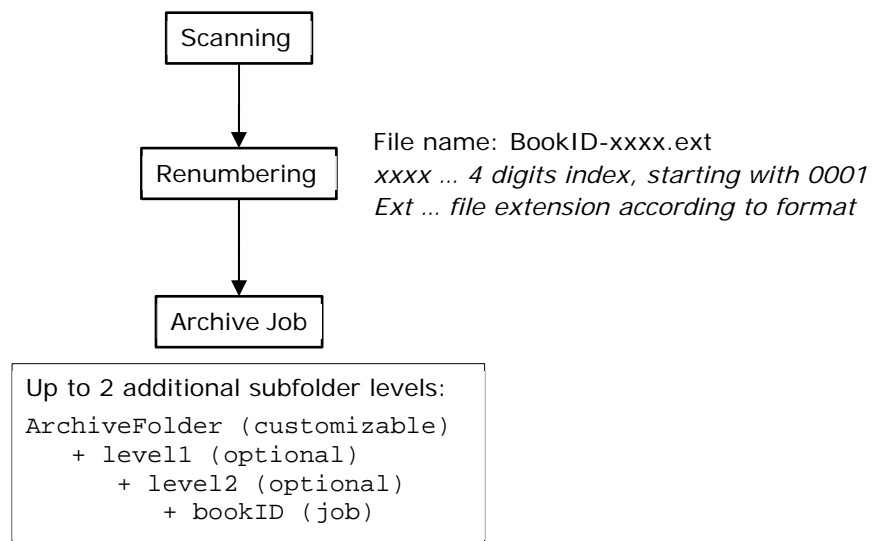
Goal

The aim of this specific RTB-workflow is to automatically move the produced scan-jobs from your ScanRobot® scanning station to e.g. a storage-place and/or a ScanGate® LWF workstation.

Prerequisites for the execution of this RT-Batch workflow:

None.

Workflow description (additional customization not included)



SCANROBOT® 2.0 MDS: RT-BATCH WORKFLOW OPTIONS

1.5 RTB-Workflow: “Export to NAINUWA®”

This is an optional “RT-Batch workflow” for “ScanGate® RT” on your automatic book scanner “ScanRobot® 2.0 MDS”.

Goal

The aim of this specific RTB-workflow is to automatically upload the produced output data from your ScanRobot® scanning station to the Digital Archive – NAINUWA®. This also includes the generation of NAINUWA® ready “pyramidic” files and automatized synchronization with an existing NAINUWA® system by hot folder.

Prerequisites for the execution of this RT-Batch workflow:

None.

Workflow description (additional customization not included)

